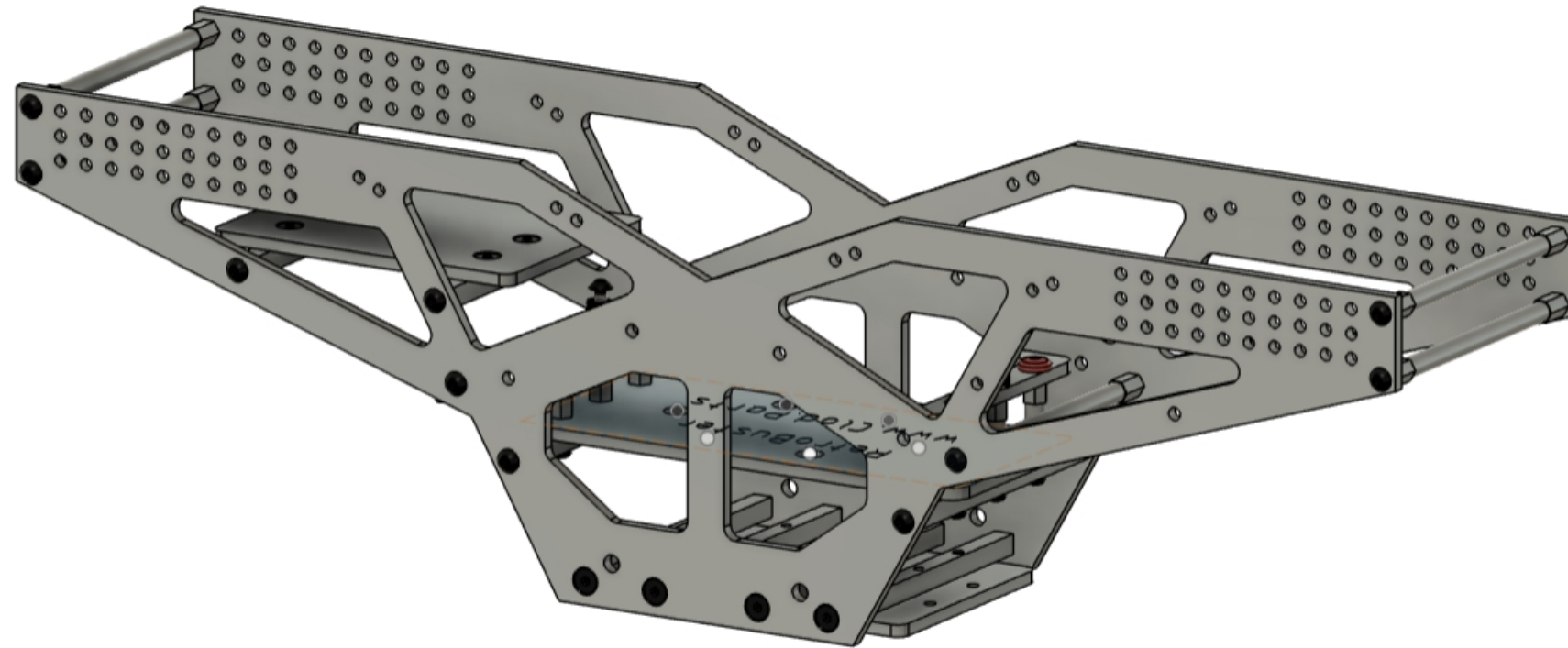


RetroBuster V1.1

www.clod.parts
www.bentaxlebill.com



Huge thanks for picking up a RetroBuster from Clod.Parts! This Retro2-style Clod chassis was built with a whole lot of late nights, trial-and-error, and probably more Caffeine than I'd like to admit. It's a living project—always changing and getting better—so if you've got feedback, wild ideas, or even just a "wouldn't it be cool if?" suggestion, I'm all ears.

I machine all the G10 parts myself in Adell Wisconsin, which makes tweaking things pretty easy. So let's make this chassis even cooler together.



Scan Me!

Please visit <https://www.clod.parts/retrobuster/> for setup information.

Feel free to reach out to me with any questions or comments and please submit pictures of your build!

<https://www.clod.parts/>

<https://www.bentaxlebill.com/>

Bill@clod.parts

<https://www.instagram.com/ClodPartsRacing/>

<https://www.facebook.com/ClodPartsRacing/>

Updates in Version 1.1:

-Removed optional battery strap.

-Replaced stacked 3mm G10 shock spacers with 10mm aluminum stand-offs.

- Even better instructions.

- Golden Racing Nut

RetroBuster V1.1

www.clod.parts
www.bentaxlebill.com

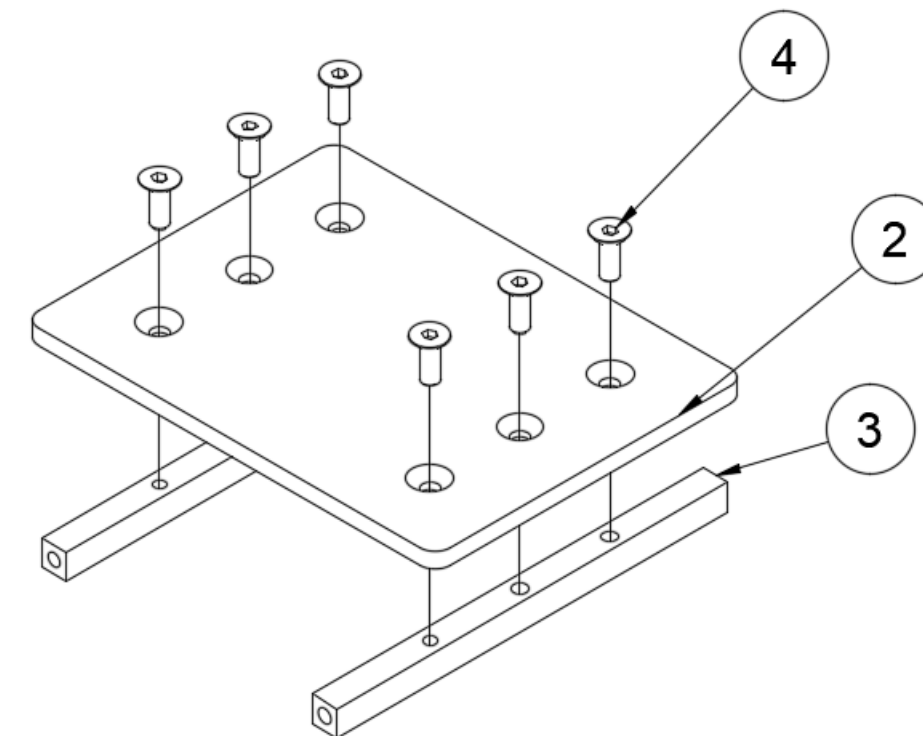
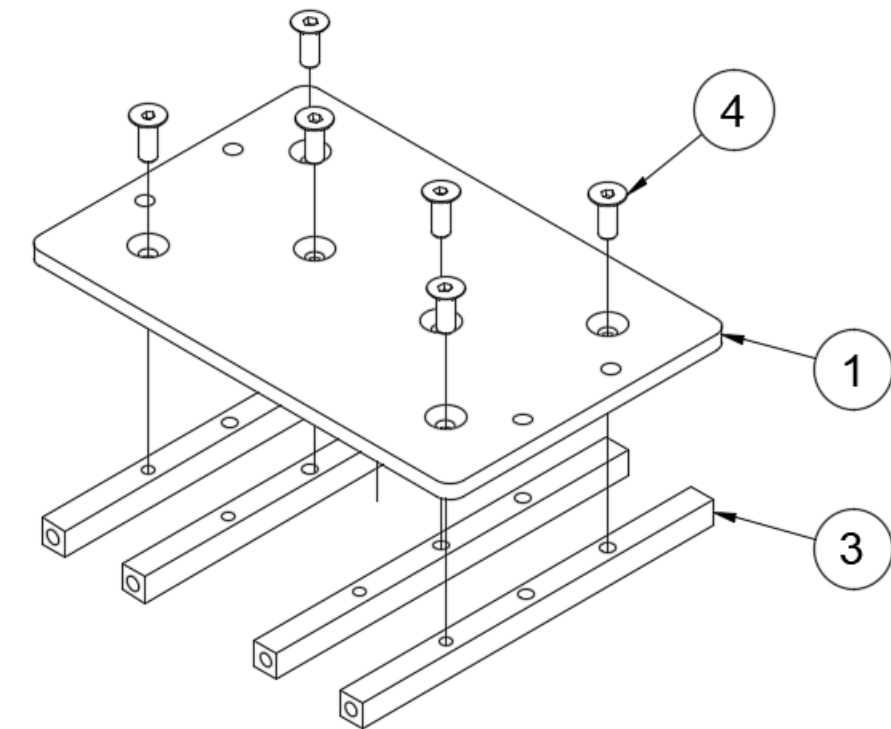
Parts List – Skid plate & Radio tray		
Item	Qty	Name
1	1	G10 Skid plate
2	1	G10 Radio tray
3	6	78mm aluminum cross brace mount
4	12	M3x8 Flat head screw
5	4	M3 Lock nut (Not Shown)

Skid Plate

- Start by taking one M3x8 flat head screw (#4) and insert it into any counter sunk hole on the G10 Skid plate (#1) and screw it into the 78mm aluminum cross brace mount as shown in the picture on the upper right. Keep these screws slightly loose to ease in installation on the chassis plates later. Do this for all the counter sunk holes on the G10 Skid plate.
- At this time, it is advisable to install your lower Clodbuster ball ends (User supplied). Use the four M3 Lock nuts (#5) to secure the ball ends.
 - If you are planning on doing the LCG battery mount, please make sure the ball end threads do not extend past the m3 lock nuts.

Radio Tray

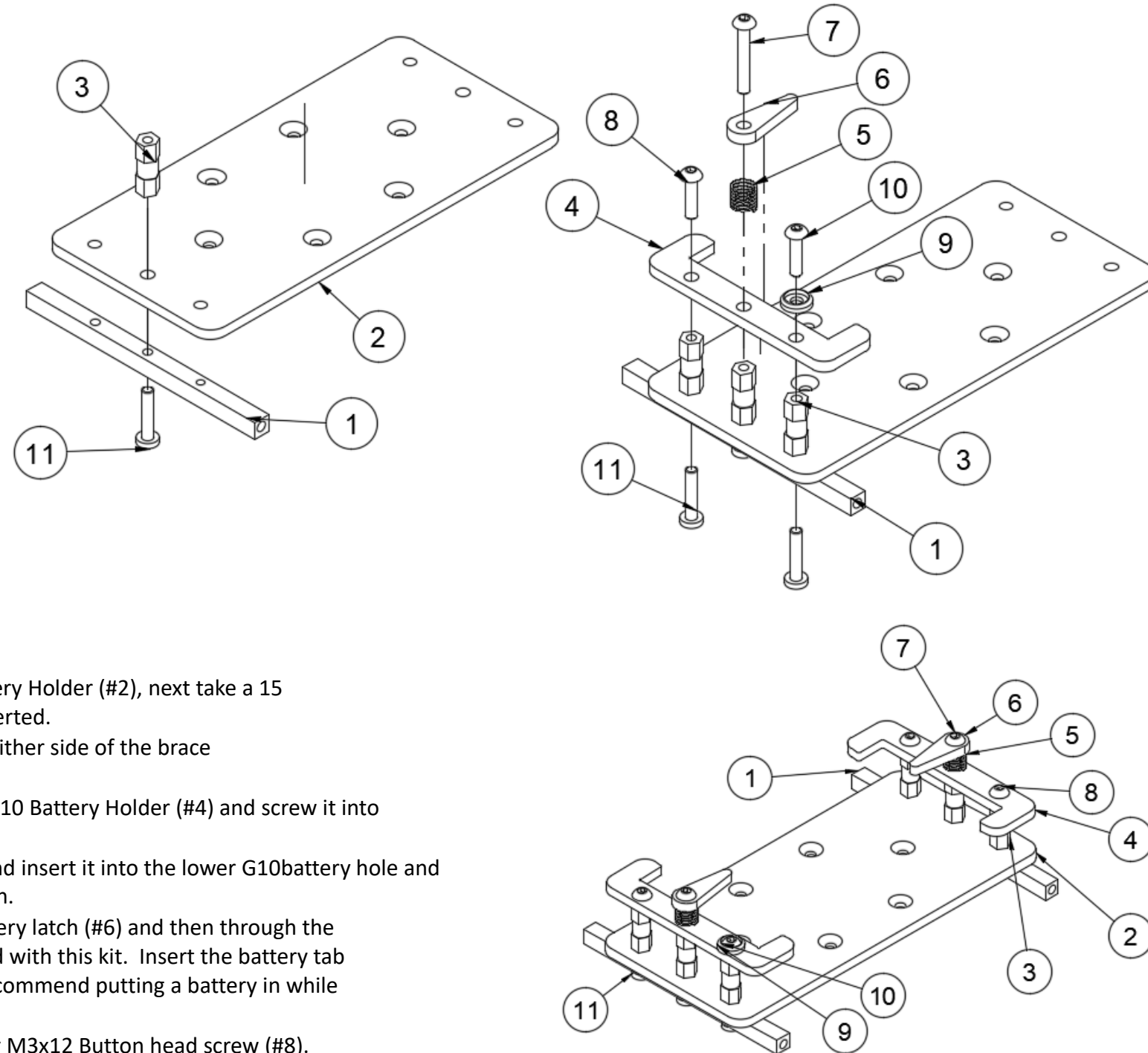
- Start by taking one M3x8 flat head screw (#4) and insert it into the center hole on the G10 radio tray (#2) and screw it into the center hole of the 78mm aluminum cross brace mount (#3) as shown in the picture on the lower right. Next repeat with the out side holes in the plate and repeat on the other side of the radio tray.
- Loctite is supplied and recommended.



RetroBuster V1.1

www.clod.parts
www.bentaxlebill.com

Parts List – 2S Battery Tray		
Item	Qty	Name
1	2	78mm aluminum cross brace mounts
2	1	G10 Battery tray
3	6	15mm Aluminum standoff
4	2	G10 Battery holder
5	2	Blue Spring
6	2	G10 Battery latch
7	2	M3x20 Button head screw
8	3	M3x12 Button head screw
9	1	Red washer
10	1	Red M3x12 Aluminum screw
11	6	M3x14 Button head screw.

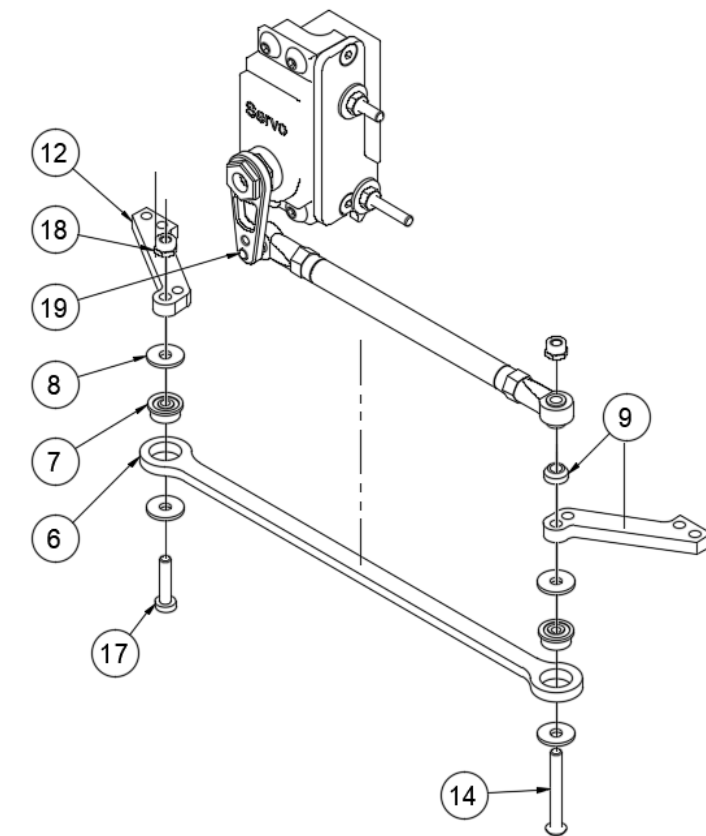
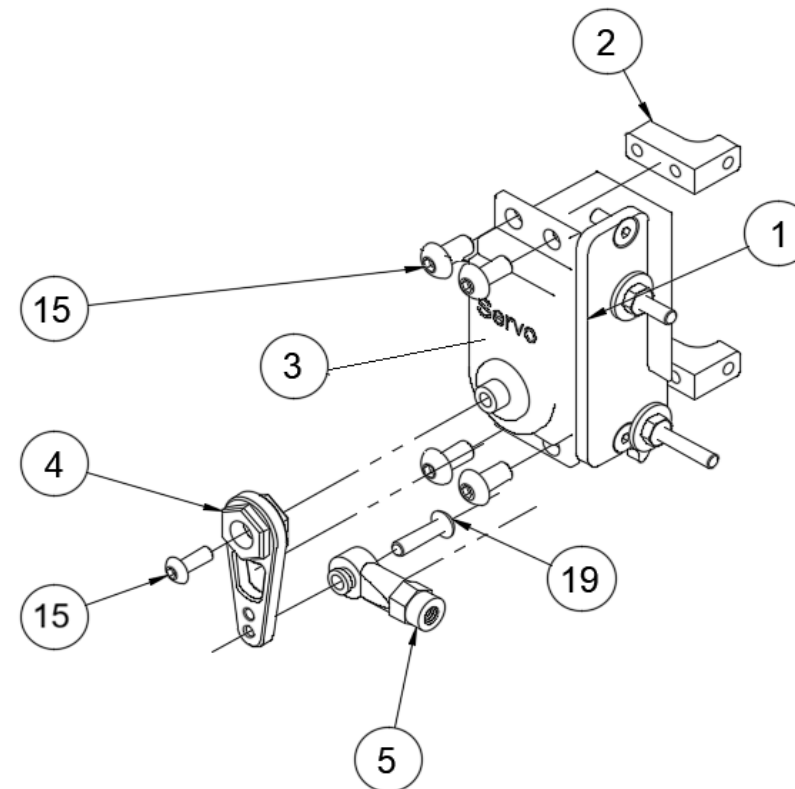
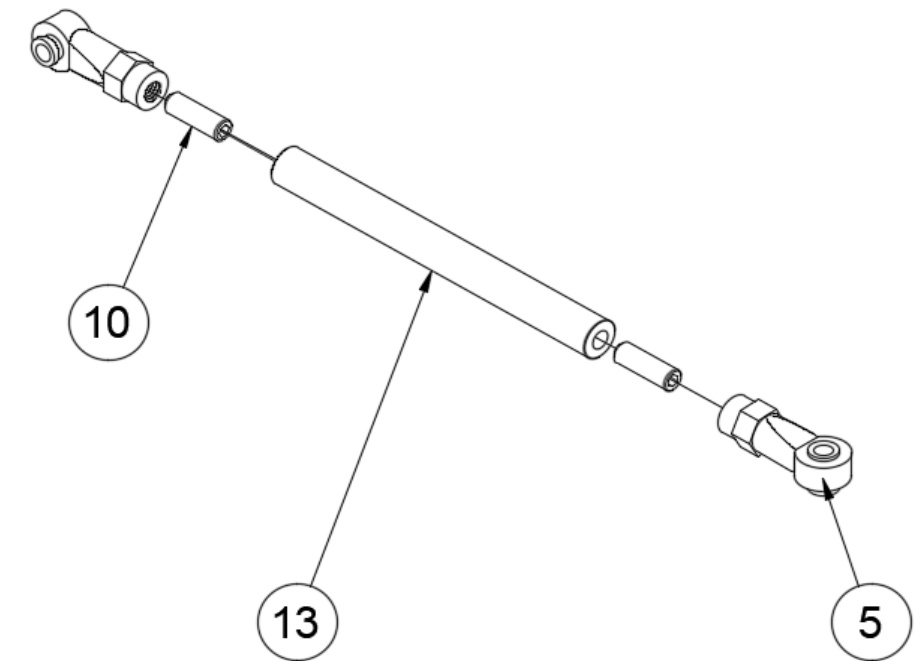
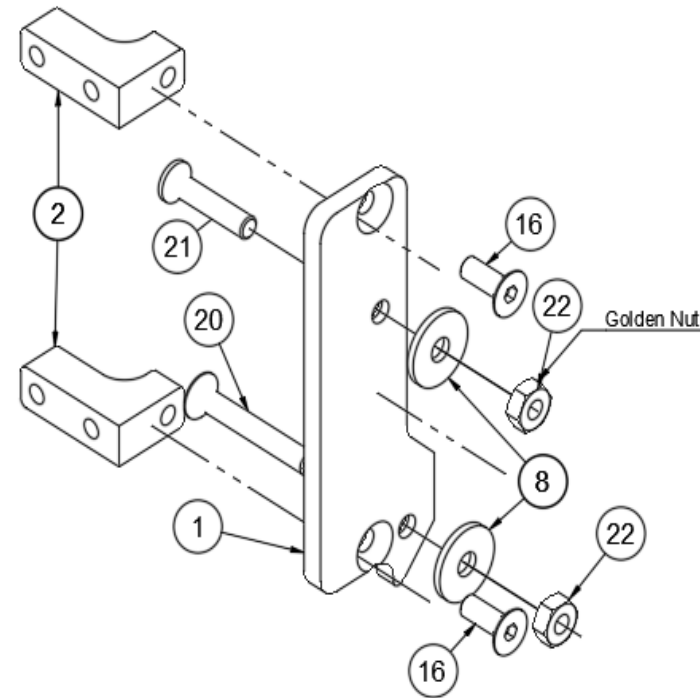


- Medium Loctite is recommended and supplied!
- Start by taking one M3x14 button head screw (#11) and insert it into the center 78mm aluminum cross brace mount (#1).
- Fully tighten the screw and insert it into the center hole of the G10 Battery Holder (#2), next take a 15mm Aluminum stand off (#3) and screw that onto the screw you just inserted.
- Take two M3x14 Button head screw (#3) and screw it into the holes on either side of the brace going through the battery tray and add two more 15mm standoffs.
- Take a M3x12 Button head screw (#8) and insert it into one side of the G10 Battery Holder (#4) and screw it into the top standoff.
- Insert the Red M3x12 aluminum screw (#10) into the Red washer (#9) and insert it into the lower G10battery hole and screw it into the standoff. This is an aluminum screw, do not over tighten.
- Take a M3x20 Button head screw (#7) and insert it through the G10 battery latch (#6) and then through the Blue spring (#6). I highly recommend using the included Loctite included with this kit. Insert the battery tab assembly into the center hole and tighten almost all the way down. I recommend putting a battery in while doing this.
- Repeat for the other side omitting the red screw and washer for another M3x12 Button head screw (#8).
- If mounting to the LCG location, do not use the 78mm aluminum cross brace mounts (#1) Six M3x8 Flat head screws are included for this option.

RetroBuster V1.1

www.clod.parts
www.bentaxlebill.com
CP-008

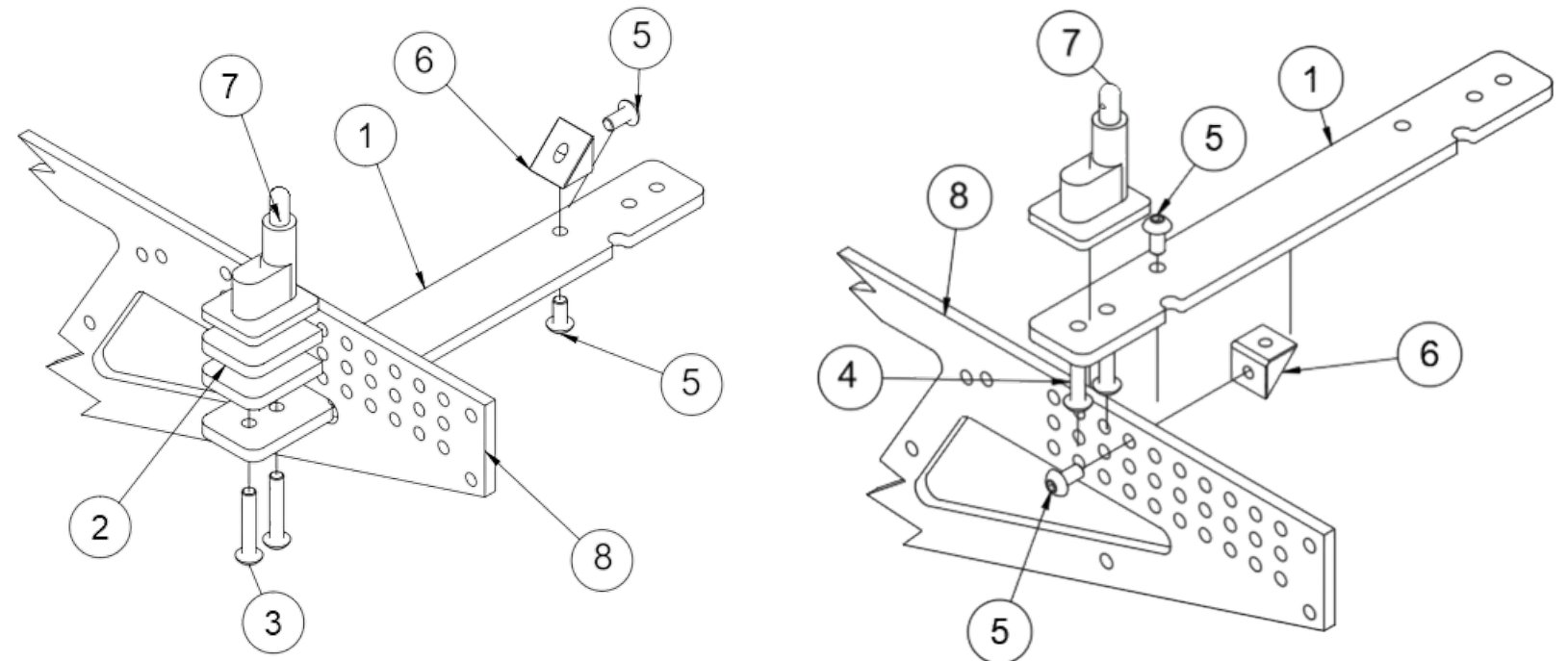
Parts List – Steering		
Item	Qty	Name
1	1	G10 Servo Plate
2	2	Aluminum Servo Mount
3		Servo (User Supplied)
4	1	Aluminum Servo Horn
5	2	M4 Rod end
6	1	G10 Steering Link
7	2	Flange Bearing
8	6	M3x9 Plastic Washer
9	1	Conical Washer
10	2	M4 Set screw
12		Steering Hubs (User Supplied)
13	1	70MM Aluminum link
14	1	M3x25 Button head screw
15	5	M3x8 Button head screw
16	2	M3x8 Flat head screw
17	1	M3x14 Flat head screw
18	2	M3 Lock nut
19	1	M3x12 Button head screw
20	1	M3x20 Flat head screw
21	1	M3x18 Flat head screw
22	2	M3 nut



RetroBuster V1.1

www.clod.parts
www.bentaxlebill.com
RetroBuster V1
CP-002

Parts List – Stock Body Mount		
Item	Qty	Name
1	3	G10 Stock body mount plate
2	8	G10 +3MM Stock Body Mount Spacer
3	8	M3x14 Button head fastener
4	8	M3x12 Button head fastener
5	8	M3x6 Button Head Fastener
6	4	Aluminum angle bracket
7		Stock body mount (User Supplied)
8		RetroBuster Chassis



Stock Body Low Mounting Position

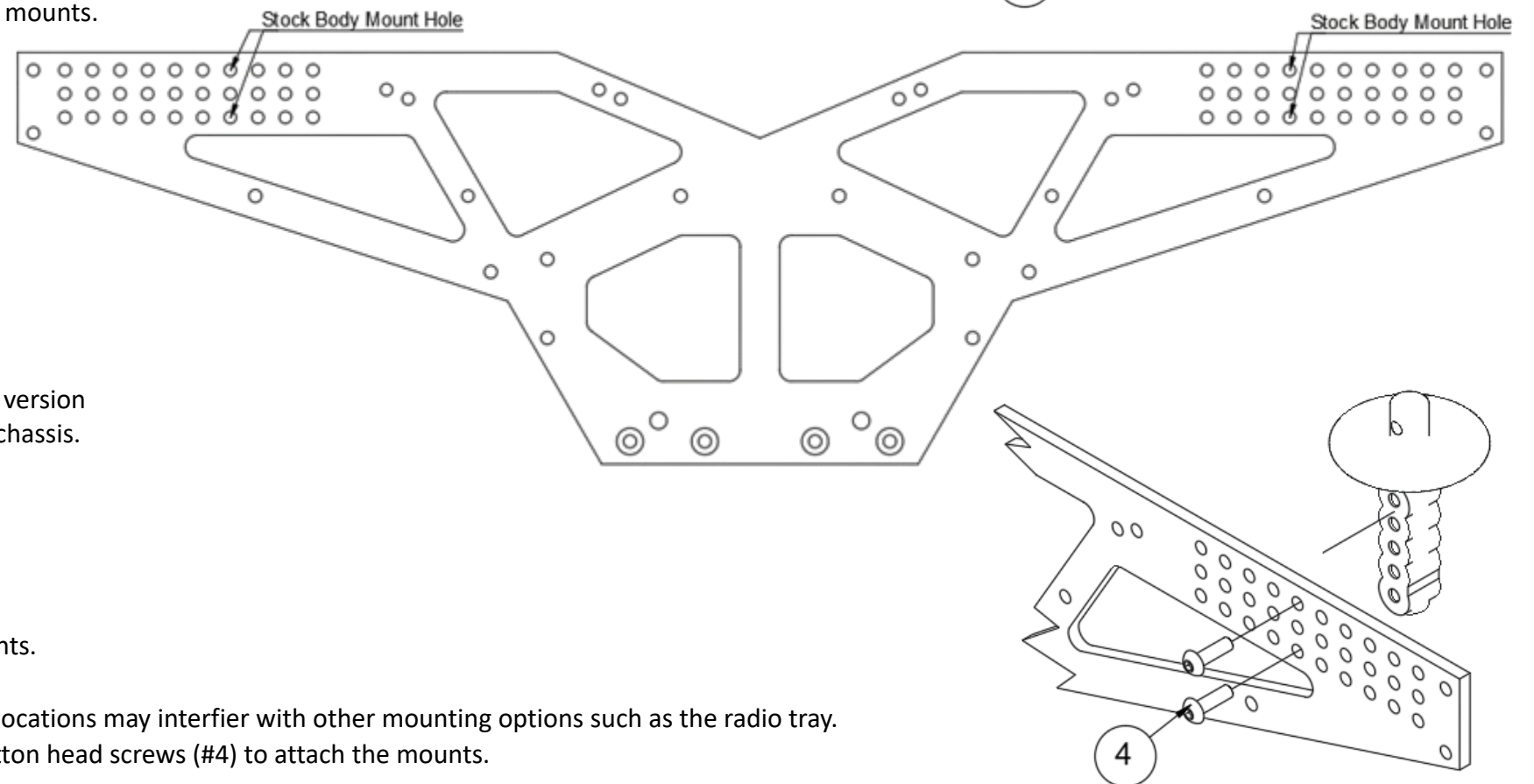
- The first image to the right shows the low profile mount setup for stock body mounts.
- You will need to use one of the standard body mount plates and the notched version pictured to the right (#1) if using stock body. The notch faces the end of the chassis.
- You will need to add one to two G10 Spacers (#2) to raise the stock body mounts above the chassis.
- Please refer to the full size chassis to the right for stock body mounting holes. You will need to use the lower holes for this option.

Stock Body High Mounting position.

- The far right image shows the setup of the stock high position body mounts.
- You will need to use one of the standard body mount plates and the notched version pictured to the right (#1) if using stock body. The notch faces the end of the chassis.
- You can use the G10 Spacers to raise the body mounts 3-6mm.
- Please refer to the full size chassis to the right for stock body mounting holes. You will need to use the upper holes for this option.

LMT Style Body Mounts

- The holes on the chassis are spaced apart exactly as the LMT style body mounts.
- You will need to trim down the body mounts as they are very long.
- You can pick any position you want for your mounts. Just remember certain locations may interfere with other mounting options such as the radio tray.
- You can mount in side the chassis or out side the chassis. Use the M3x12 Button head screws (#4) to attach the mounts.

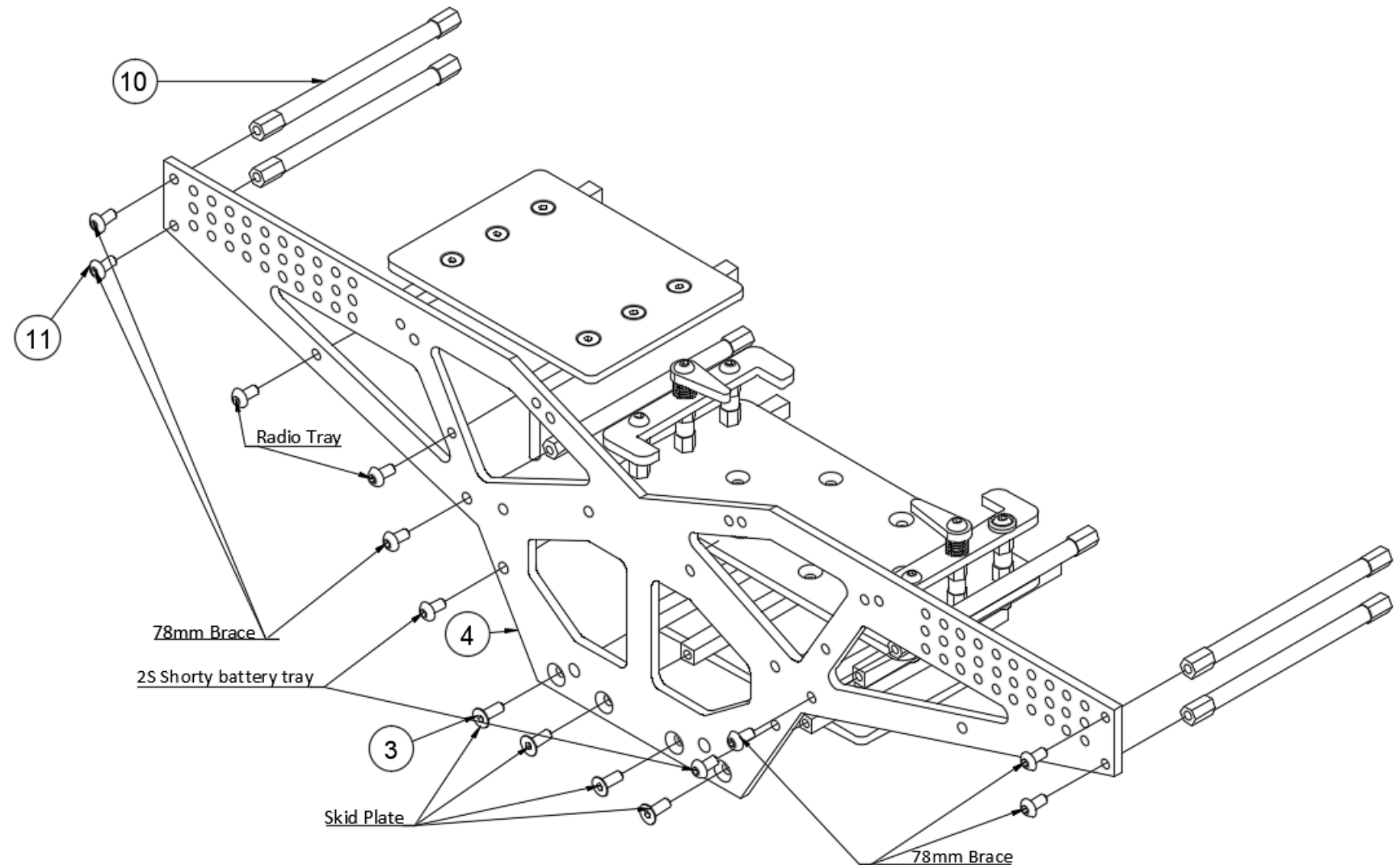


RetroBuster V1.1

www.clod.parts
www.bentaxlebill.com

Parts List – Chassis		
Item	Qty	Name
3	8	M3x8mm Flat head screws
4	2	G10 Chassis plates
10	6	78mm aluminum brace
11	20	M3x8 Button head screw
12	4	M4 Lock nut (Not Shown)

- It is highly recommended that you install your BH5 Ball ends (user supplied) before assembling the chassis. Four M4 Lock nuts (#12) have been included. If you are using a 4-link system, four conical washers (#13) have been included.
- Use four M3x8 Flat head screws (#3) to attach the skid plate to the four countersunk holes at the lower part of the chassis. Do not tighten!
- There are six 78mm Aluminum braces (#10) that need to be attached with M3x8 Button head screws (#11). Do not fully tighten. Please see the locations in the diagram.
- Now it is a good time to decide on your battery mounting position. Visit <https://www.clod.parts/retrobuster/> for the available locations. Shown in the diagram is the default battery location and a good starting spot. Use two M3x8 Button head screws (#11) to attach the aluminum battery tray to your desired location. Do not fully tighten.
- Next decide the location of your radio tray. You have a few options listed at the address mentioned above. The default location is shown in the diagram. The chassis is symmetrical with exception of the Clod.Parts logo, I consider this location the back of the chassis. Use two M3x8mm Button head screws (#11) to mount the radio tray. Do not tighten.
- Flip the chassis over and repeat the process on the other side.
- Once all screws are in, go back and tighten all screws. My holes are not over sized so there is not a lot of play.
- Loctite is highly recommended and supplied!



RetroBuster V1.1

www.clod.parts
www.bentaxlebill.com
CP-019-8

Parts List – Shock Setup		
Item	Qty	Name
1	8	M3x30 Button head screw
2	8	10mm Black aluminum stand-off
3	8	M3 Black lock nut
4	8	Black washer (See Below)
5*	4	M3x12 Button head screw
6*	4	M3 Black nut
7 & 8	NA	User supplied shocks & bushing.
9		RetroBuster Chassis

Shock Setup

- Start by taking a M3x30 Button head screw (#1), slid on your shock bushing with the big side facing the head (#7). Shock designs may vary depending on the shock you use. Slide your shock over the bushing.
- Next slide on one of the washers (#4). You have a choice here, You can use the M3x8x1 metal washer or the M3x10x1 Plastic washer. Both are included to satisfy all shock types. If your shock has built in eyelets, you can even omit this step.
- Next take the 10mm Black stand-off (#2) and thread it on. Do not over tighten this as you do not want to deform your shock bushing (#7).
- Select an appropriate location for your shock and attach the M3 lock nut (#3). The M3x30 is long enough to accommodate all shocks.
- Included in the kit is hardware to attach your lower shocks to the ladder bars. Use the M3x12 Button head screw (#5) or the M3x14 Button head screw and the M3 nut (#6) to secure the shock end to your ladder bar. Both sized screws are included again to accommodate different shocks. I recommend using the included Loctite on this nut.

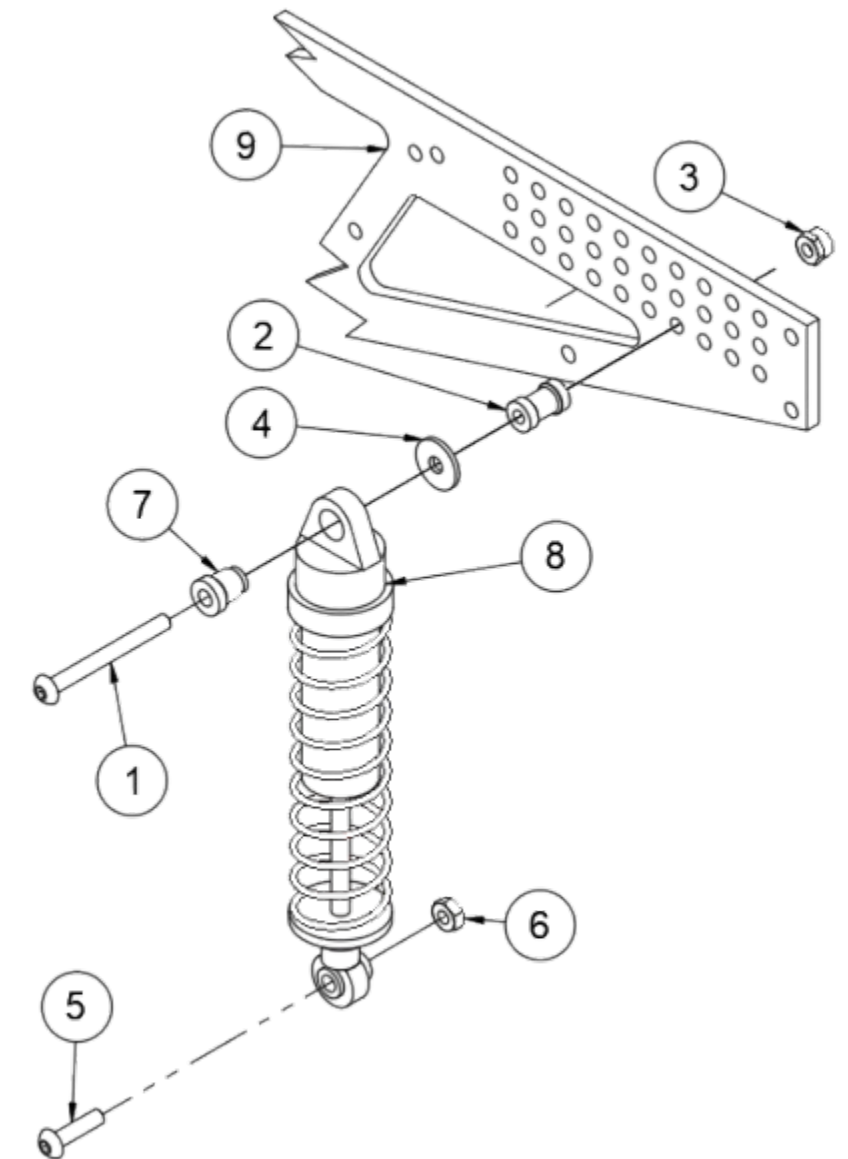
Enough parts are included to setup dual shocks on the RetroBuster.

Recommended Shock Specs for racing:

- Around 100mm length (eyelet to eyelet). I personally love the Gmade GM21407 XD Aeration Shock 103mm.
- Light oil 15-20 wt
- Light springs

You will have to try out different setups that work with your driving style, and track.

*If you purchase the Stand-off kit separately (such as CP-0019-8 & CP-0019-12), they will not include the lower mounting hardware.



RetroBuster V1.1

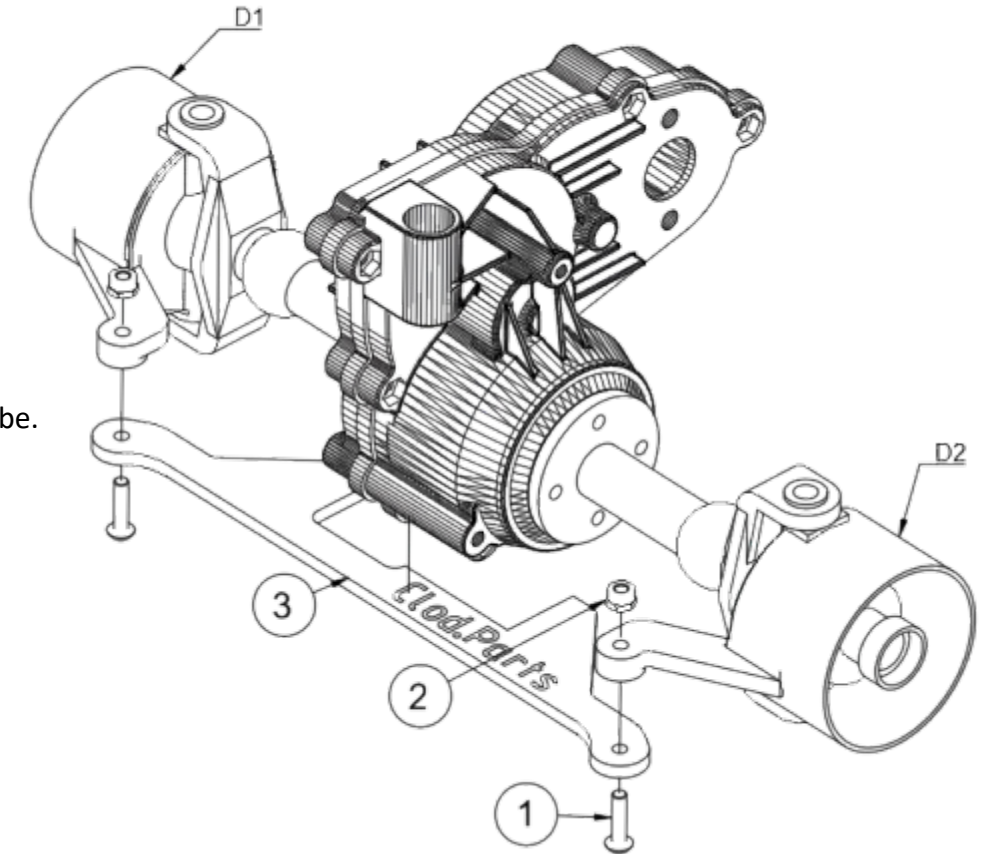
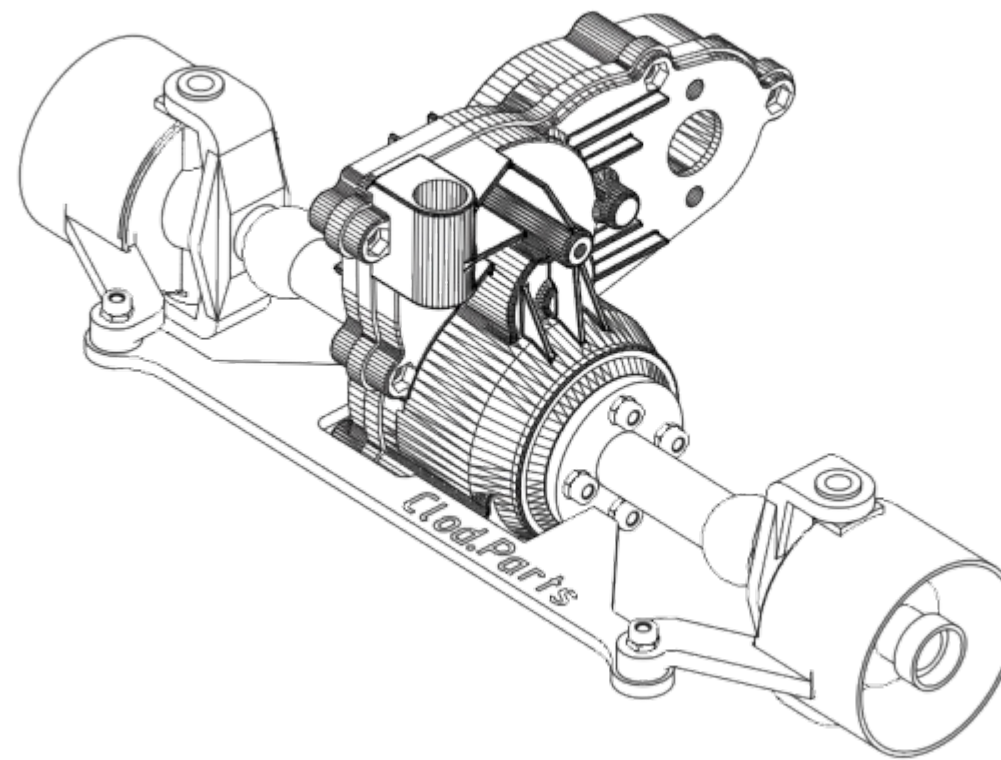
www.clod.parts
www.bentaxlebill.com
CP-020

Parts List – Rear Lockout		
Item	Qty	Name
1	2	M3x12 Button head screw
2	2	M3 Lock nut
3	1	G10 Lockout

Lockout Setup

- You will need to swap your steering hubs as shown in the picture.
- With the text side facing up, slide up the G10 Lockout (#3) to the axle tubes, the lockout will go just under the locknuts on your axle tube.
- This is a very tight fit, but it will go in.
- Align the holes with your steering knuckles.
- Use the included M3x12 Button head screws (#1) and place them through the G10 Lockout hole from the bottom going through the steering knuckles. Secure with the included M3 Lock nuts (#2)

This lockout has not been verified on aftermarket parts.



RetroBuster V1.1

www.clod.parts
www.bentaxlebill.com

Fasteners & Small Parts

Parts Box Layout

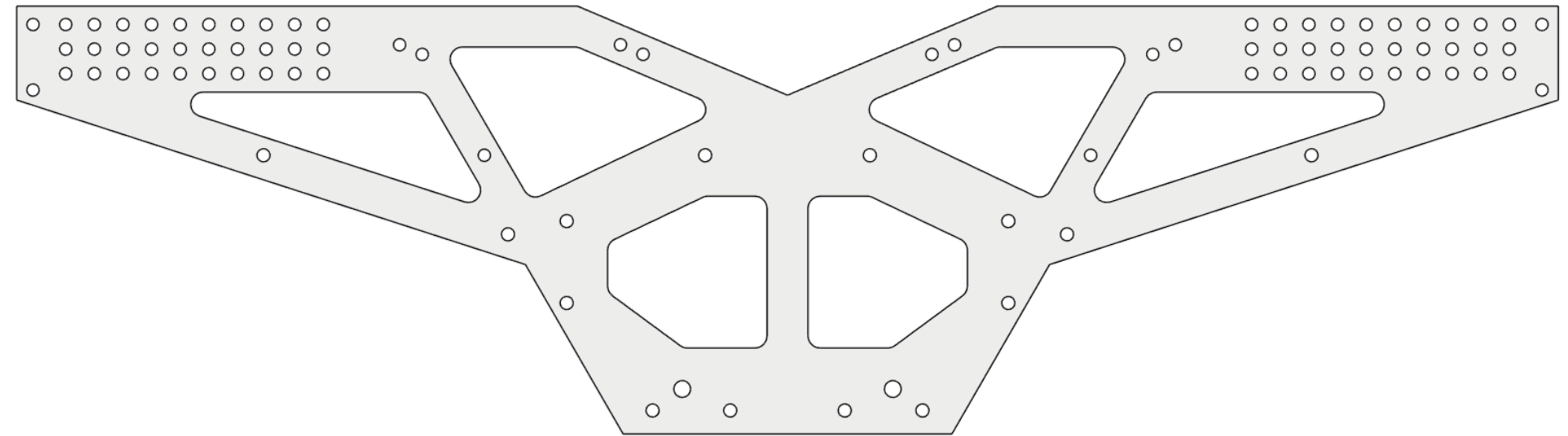
G10 Body Spacers (+3mm) (Qty: 8)	Triangle Bracket (Qty: 4)	M3 Conical Washer (Qty: 1)		Servo Horn (Qty: 1)	Aluminum Servo Mounts (Qty: 2)	M4 Set Screw Rod Ends (Qty: 2 & 2)
G10 Battery Tabs (Qty: 4)	Red Washer M3x8 Button Head (Qty: 1 & 1)	Hex Stand-off 15mm (Qty: 6)	Round Stand-off 10mm (Qty: 8)	Bearings (Qty: 2)	M3x8x1 Metal Washer (Qty: 8)	M3x10x1 Plastic Washer (Qty: 14)
M3x30 Button Head (Qty: 8)	M3x8 Flat Head (Qty: 28)	M3x18 Flat Head (Qty: 1)	M3x20 Flat Head (Qty: 1)	M3 Nut M3 Golden Nut (Qty: 10 & 1)	M3 Lock Nut (Qty: 18)	M4 Lock Nut (Qty: 4)
M3x6 Button Head (Qty: 8)	M3x8 Button Head (Qty: 25)	M3x10 Button Head (Qty: 8)	M3x12 Button Head (Qty: 14)	M3x14 Button Head (Qty: 23)	M3x20 Button Head Blue Springs (Qty: 2 & 2)	M3x25 Button Head (Qty: 1)

RetroBuster V1.1

www.clod.parts
www.bentaxlebill.com

Truck Name: _____
Body: _____
Radio Program: _____
Sponsors: _____
Track Surface: _____

Shocks: _____
Length: _____
Pistons: _____
Springs: _____
Oil: _____



Ladder Bar Style: _____
Ladder Bar Length: _____
Gear Boxes: _____
Axle Tubes: _____
Steering Hubs: _____

Additional Weight: _____
Weight Location 1: _____
Weight Location 2: _____
Weight Location 3: _____

Servo: _____
Torque: _____
Steering System: _____
Servo Saver: _____
Rear Steer: _____

ESC: _____
Motors: _____
Turns: _____
Pinions: _____
Receiver: _____

Battery Location: _____
Radio Tray Location: _____

Tires: _____
Wheels: _____
Foams: _____
Adapter Width: _____
Adapter Material: _____

Misc: _____

